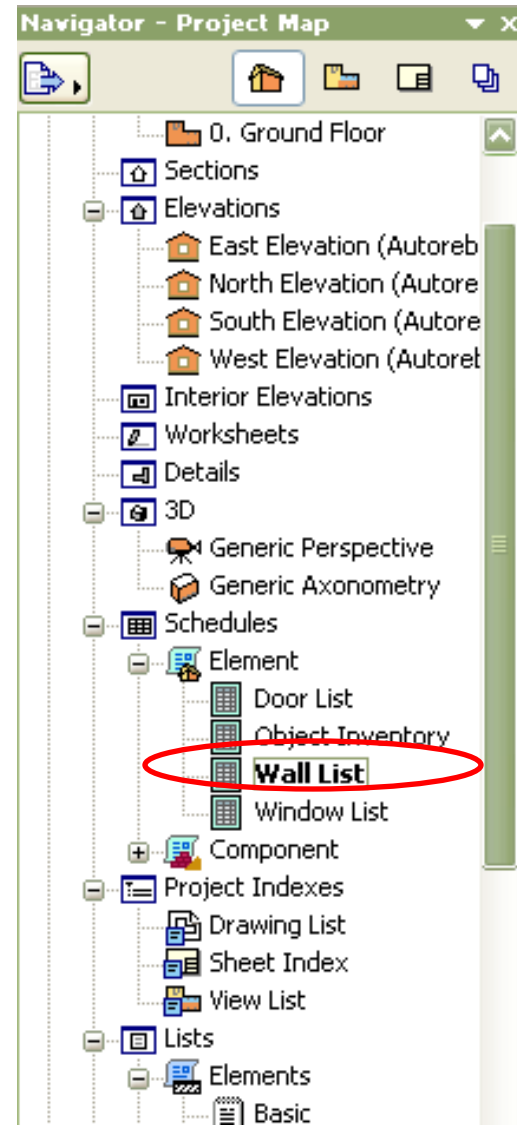
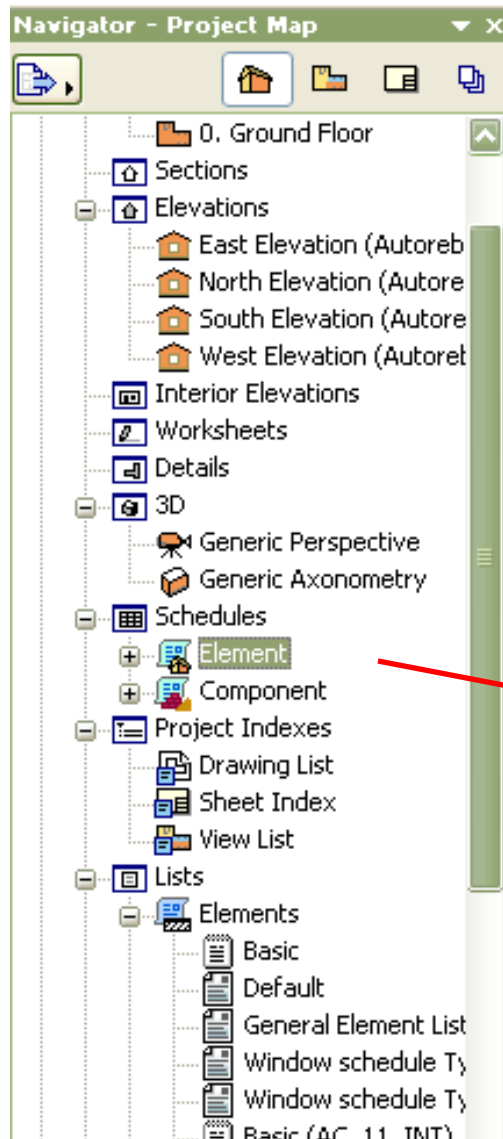


Софтвери у грађевинарству

мр Вуле Алексић, проф.

Предавање IX

Документација



Документација

Schedule Options

Style: Records by Rows

Show uniform items as a single entry

Show headline

Headline Settings...

Format Options

Apply to: Header

Font: Arial

Encoding: Western

M ↑ 3.0 mm

M ↑ 2.2 mm

Font Pen: 6

Header Cell Font Style: B I U

Align Header Cell: Left Center Right Justify

Cell Border: All borders

Solid Line

Border Pen: 61

Cancel/Redo ↶ ↷

Format Change: ↶ ↷

Footer Settings...

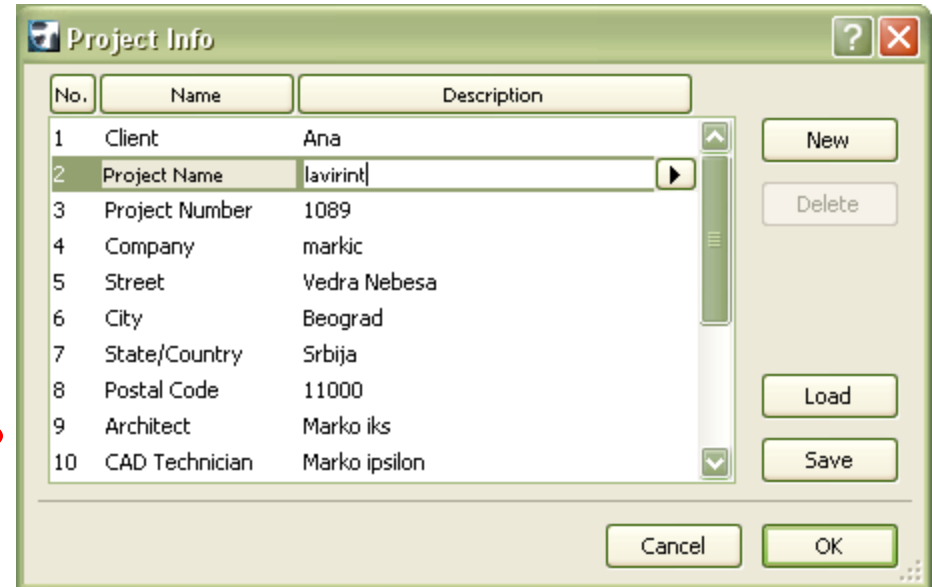
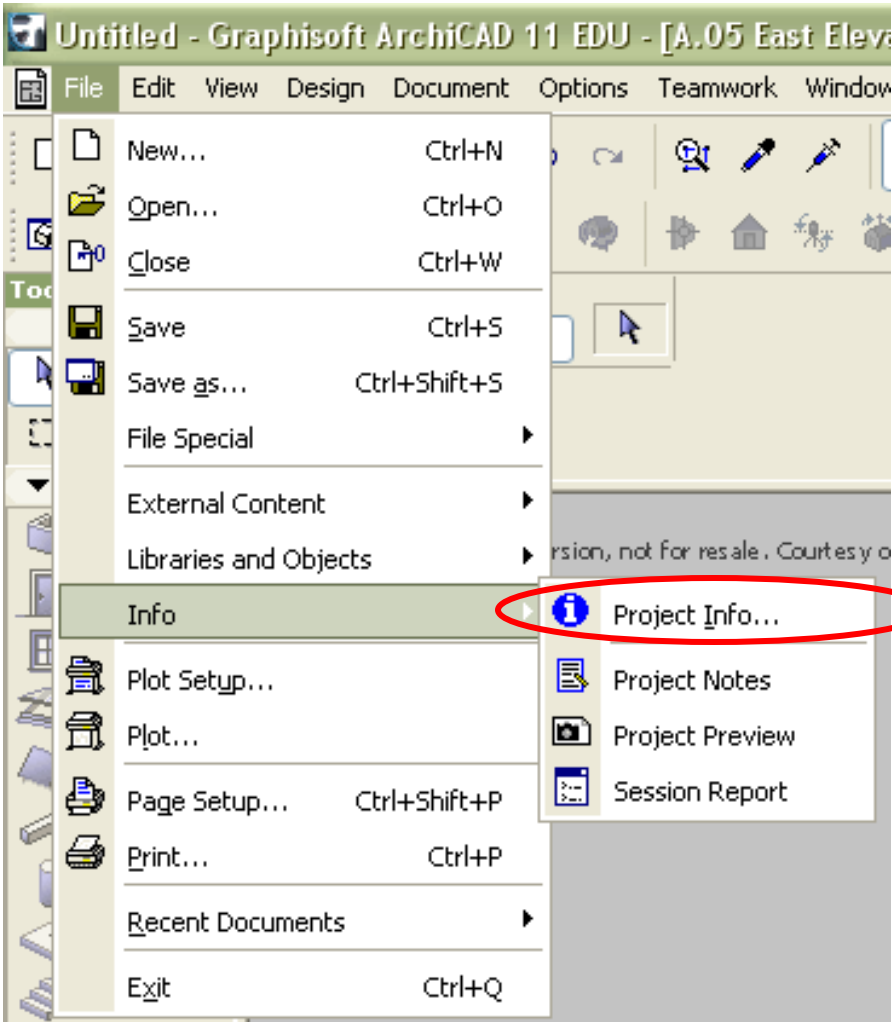
Header Options 🔍

Freeze Schedule Header

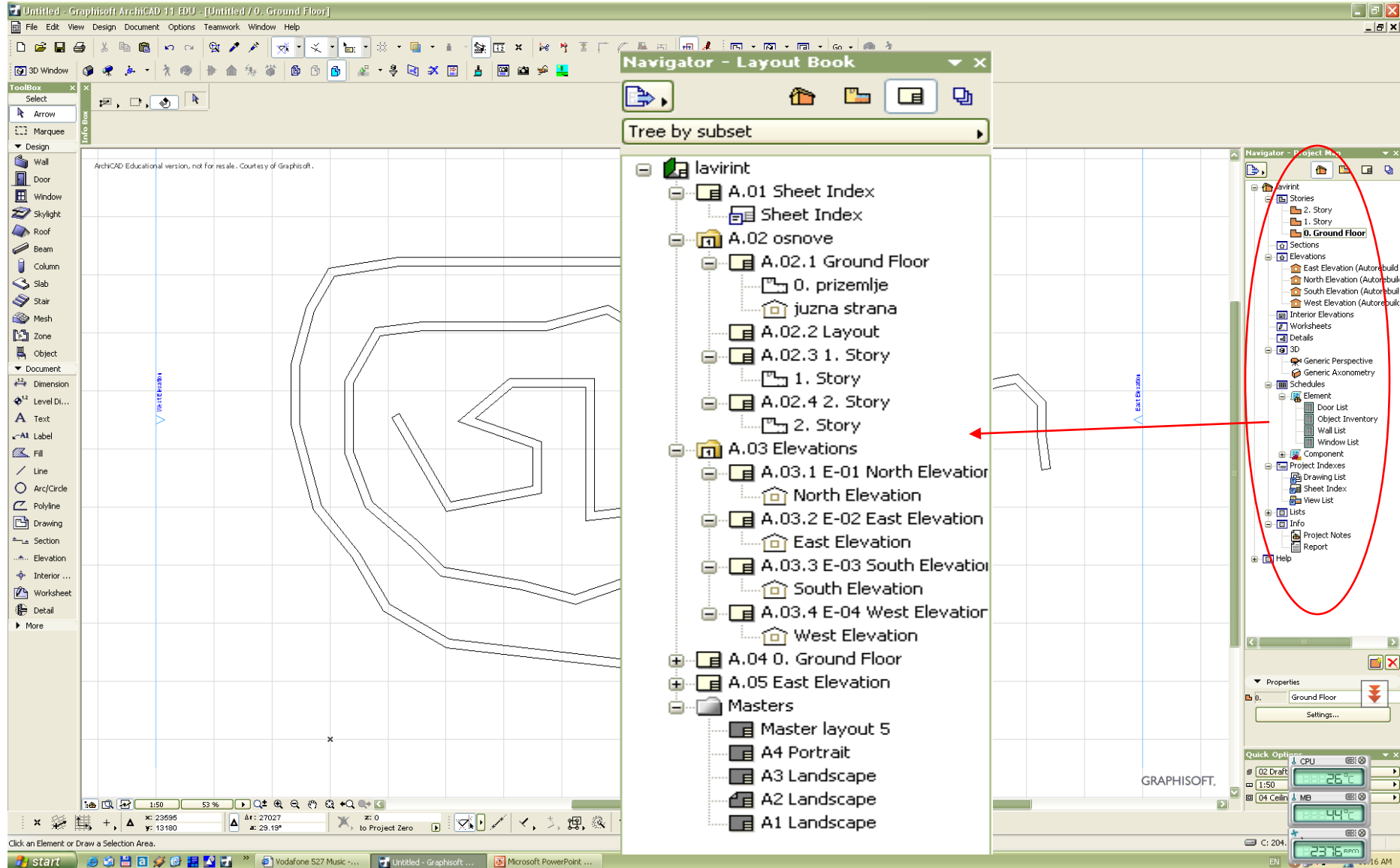
50 100 150 200

Wall Type	Volume ...	Thickness [m]	Height [m]	Area [m2]	Perimeter [m]	Length on Ref.Side [m]	Surface on Ref.Side [m2]
Masonry Blo...	0.58	0.300	2.800	0.21	2.03	0.57	1.59
Masonry Blo...	0.61	0.300	2.800	0.22	2.10	0.64	1.79
Masonry Blo...	0.93	0.300	2.800	0.33	2.83	1.05	2.94
Masonry Blo...	0.99	0.300	2.800	0.35	2.95	1.18	3.32
Masonry Blo...	1.01	0.300	2.800	0.36	3.00	1.20	3.36
Masonry Blo...	1.01	0.300	2.800	0.36	3.07	1.06	2.97
Masonry Blo...	1.10	0.300	2.800	0.39	3.22	1.32	3.68
Masonry Blo...	1.11	0.300	2.800	0.40	3.25	1.36	3.81
Masonry Blo...	1.14	0.300	2.800	0.41	3.33	1.35	3.78
Masonry Blo...	1.21	0.300	2.800	0.43	3.50	1.48	4.15
Masonry Blo...	1.22	0.300	2.800	0.44	3.50	1.45	4.06
Masonry Blo...	1.23	0.300	2.800	0.44	3.57	1.38	3.85
Masonry Blo...	1.24	0.300	2.800	0.44	3.55	1.48	4.13
Masonry Blo...	1.30	0.300	2.800	0.46	3.85	1.78	4.97
Masonry Blo...	1.31	0.300	2.800	0.47	3.75	1.64	4.59
Masonry Blo...	1.37	0.300	2.800	0.49	3.92	1.77	4.97
Masonry Blo...	1.40	0.300	2.800	0.50	3.97	1.60	4.48
Masonry Blo...	1.40	0.300	2.800	0.50	4.14	1.50	4.19
Masonry Blo...	1.41	0.300	2.800	0.50	3.96	1.68	4.69
Masonry Blo...	1.42	0.300	2.800	0.51	4.05	1.60	4.48
Masonry Blo...	1.44	0.300	2.800	0.51	4.13	1.89	5.28
Masonry Blo...	1.57	0.300	2.800	0.56	4.35	1.91	5.34
Masonry Blo...	1.61	0.300	2.800	0.57	4.44	1.98	5.54
Masonry Blo...	1.61	0.300	2.800	0.57	4.45	1.85	5.18
Masonry Blo...	1.66	0.300	2.800	0.59	4.56	1.94	5.43
Masonry Blo...	1.67	0.300	2.800	0.60	4.62	2.10	5.88
Masonry Blo...	1.67	0.300	2.800	0.60	4.89	1.67	4.67
Masonry Blo...	1.68	0.300	2.800	0.60	4.66	1.86	5.20
Masonry Blo...	1.69	0.300	2.800	0.60	4.88	2.31	6.48
Masonry Blo...	1.70	0.300	2.800	0.61	4.66	2.05	5.73
Masonry Blo...	1.70	0.300	2.800	0.61	4.78	1.88	5.25
Masonry Blo...	1.70	0.300	2.800	0.61	4.65	2.03	5.67
Masonry Blo...	1.73	0.300	2.800	0.62	4.72	2.02	5.65
Masonry Blo...	1.76	0.300	2.800	0.63	4.80	2.08	5.81
Masonry Blo...	1.77	0.300	2.800	0.63	4.82	2.07	5.81
Masonry Blo...	1.78	0.300	2.800	0.63	4.84	2.15	6.01
Masonry Blo...	1.78	0.300	2.800	0.63	4.83	2.13	5.95
Masonry Blo...	1.80	0.300	2.800	0.64	4.88	2.12	5.93
Masonry Blo...	1.83	0.300	2.800	0.65	4.95	2.18	6.09
Masonry Blo...	1.83	0.300	2.800	0.65	4.99	2.22	6.23
Masonry Blo...	1.97	0.300	2.800	0.70	5.29	2.35	6.58
Masonry Blo...	1.97	0.300	2.800	0.71	5.33	2.27	6.35
Masonry Blo...	2.01	0.300	2.800	0.72	5.43	2.48	6.93
Masonry Blo...	2.05	0.300	2.800	0.73	5.50	2.51	7.02
Masonry Blo...	2.06	0.300	2.800	0.74	5.52	2.38	6.66
Masonry Blo...	2.06	0.300	2.800	0.74	5.50	2.46	6.88
Masonry Blo...	2.15	0.300	2.800	0.77	5.87	2.73	7.63
Masonry Blo...	2.16	0.300	2.800	0.77	6.11	2.41	6.76
Masonry Blo...	2.29	0.300	2.800	0.82	6.21	2.53	7.07
Masonry Blo...	2.31	0.300	2.800	0.83	6.10	2.75	7.70
Masonry Blo...	2.36	0.300	2.800	0.84	6.24	2.86	8.00
Masonry Blo...	2.41	0.300	2.800	0.86	6.44	2.98	8.34
Masonry Blo...	2.49	0.300	2.800	0.89	6.53	2.91	8.14
Masonry Blo...	2.62	0.300	2.800	0.93	6.98	3.34	9.36

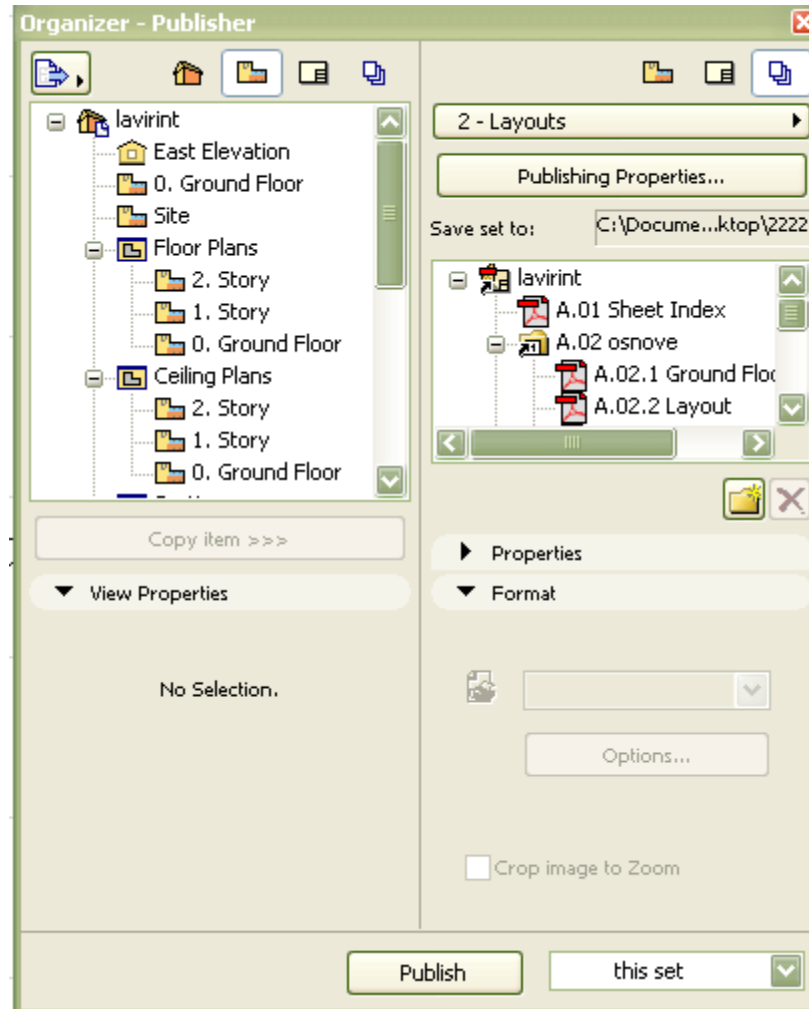
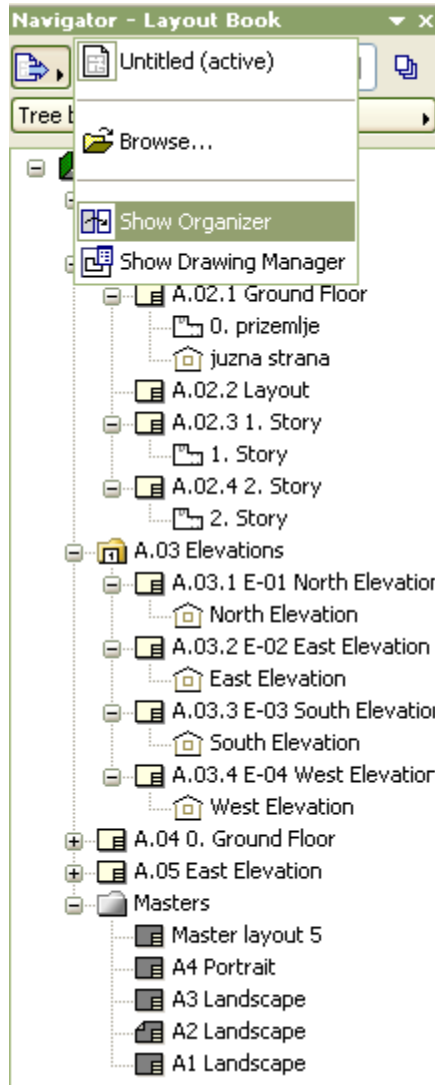
Документација



Документација

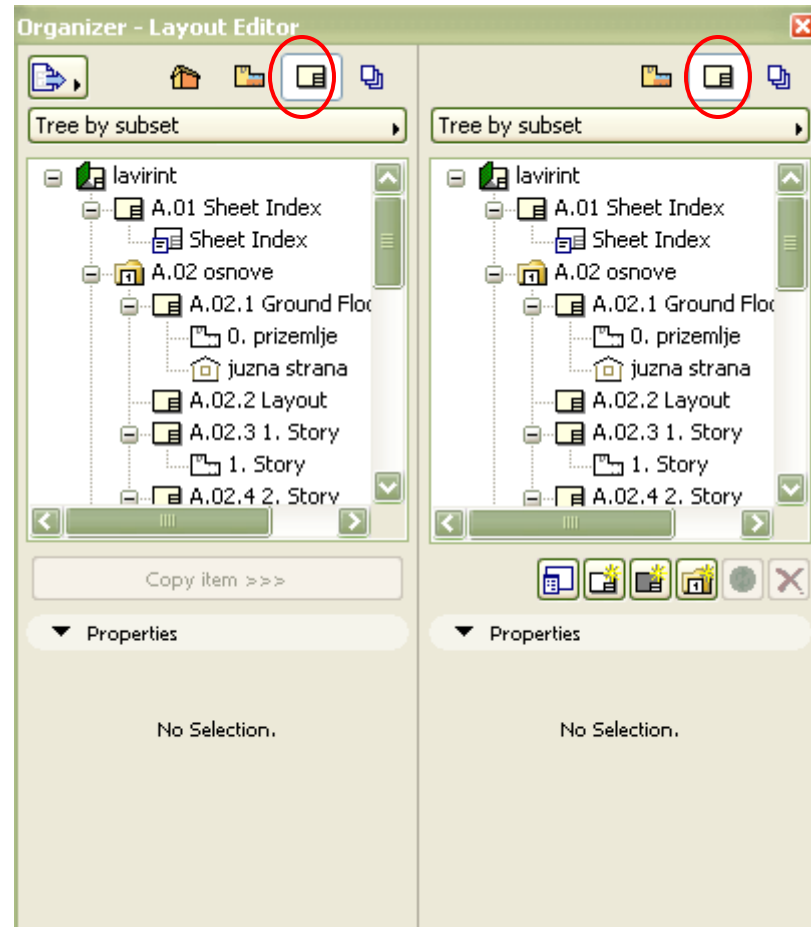


Документација



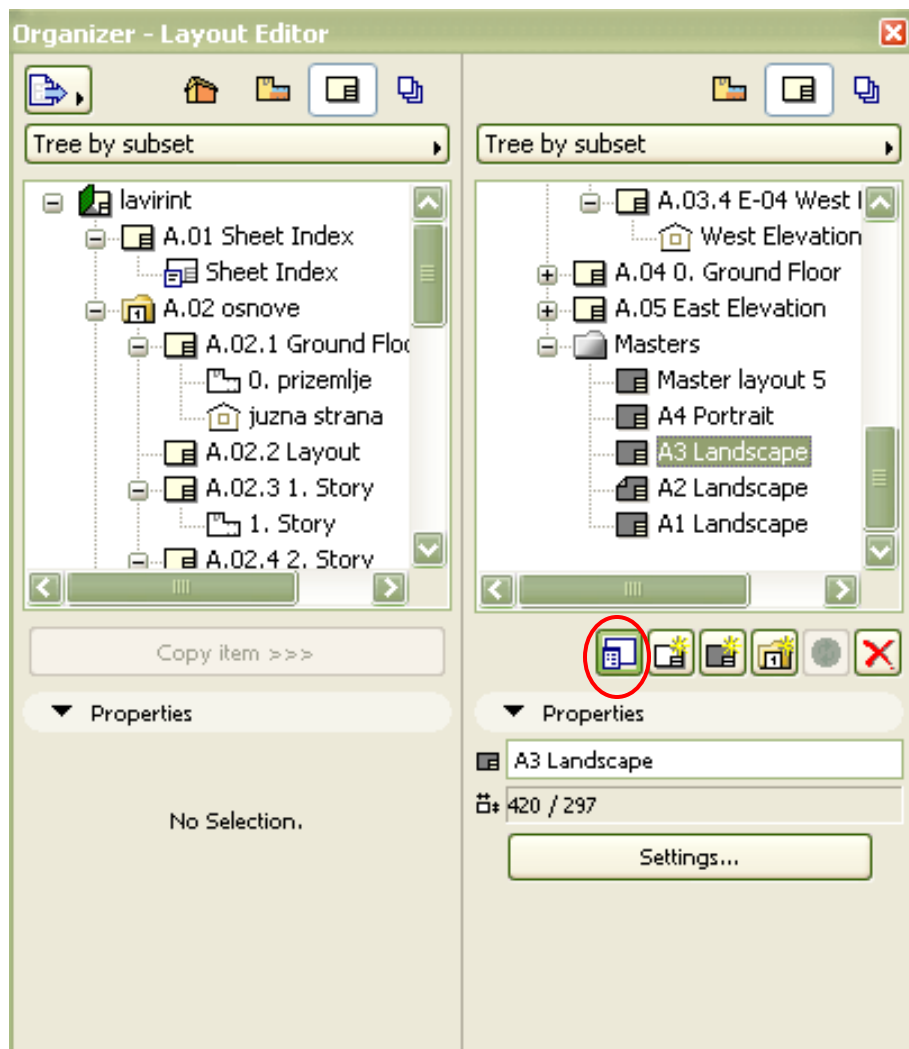
Документација

Layout book – књига са цртежима



Документација

Мастери - шаблони



Документација

Мастери - шаблони

Master Layout Settings [?] [X]

Selected: 1 Editable: 1

▼ **Name and Size**

Name:

Size: [v]

Portrait
 Landscape

Margins:


mm
 mm
 mm
 mm

Printable area:

Anchor Point: [x] [y] [x] [y]

▼ **Drawing Placement**

Auto arrange new Drawings
 Align and assign Drawings to a Grid

 This method arranges newly placed Drawings on the Layout by a pre-set logic. To determine sequence and position of drawings use the Auto Arrange Setup... Button.

Set as Default for New Layouts

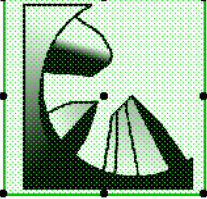
Документација

Мастери - шаблони

ArchCAD Educational version, not for resale. Courtesy of Graphisoft.

×


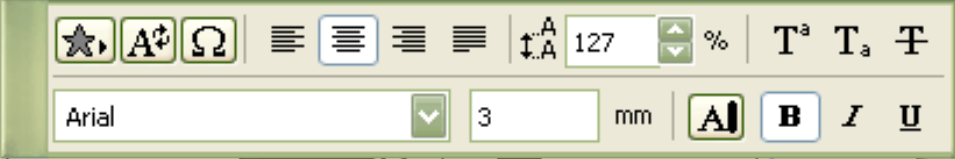
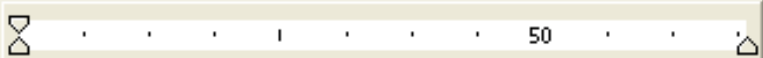
+

Company Title		
		
Company name		
Street		
City		
State/Country		
Postal Code		
Job Title		
lavrint		
Vedra Nebesa		
Beograd		
Srbija		
11000		
Drawing Name		
#Drawing Name		
Drawing Status		
Done		
Drawn by	Date	
Marko ipsilon	.	
Checked by	Date	
Marko iks	.	
Drawing Scale		
1:###		
Layout ID	Status	Revision
#LayID	.	

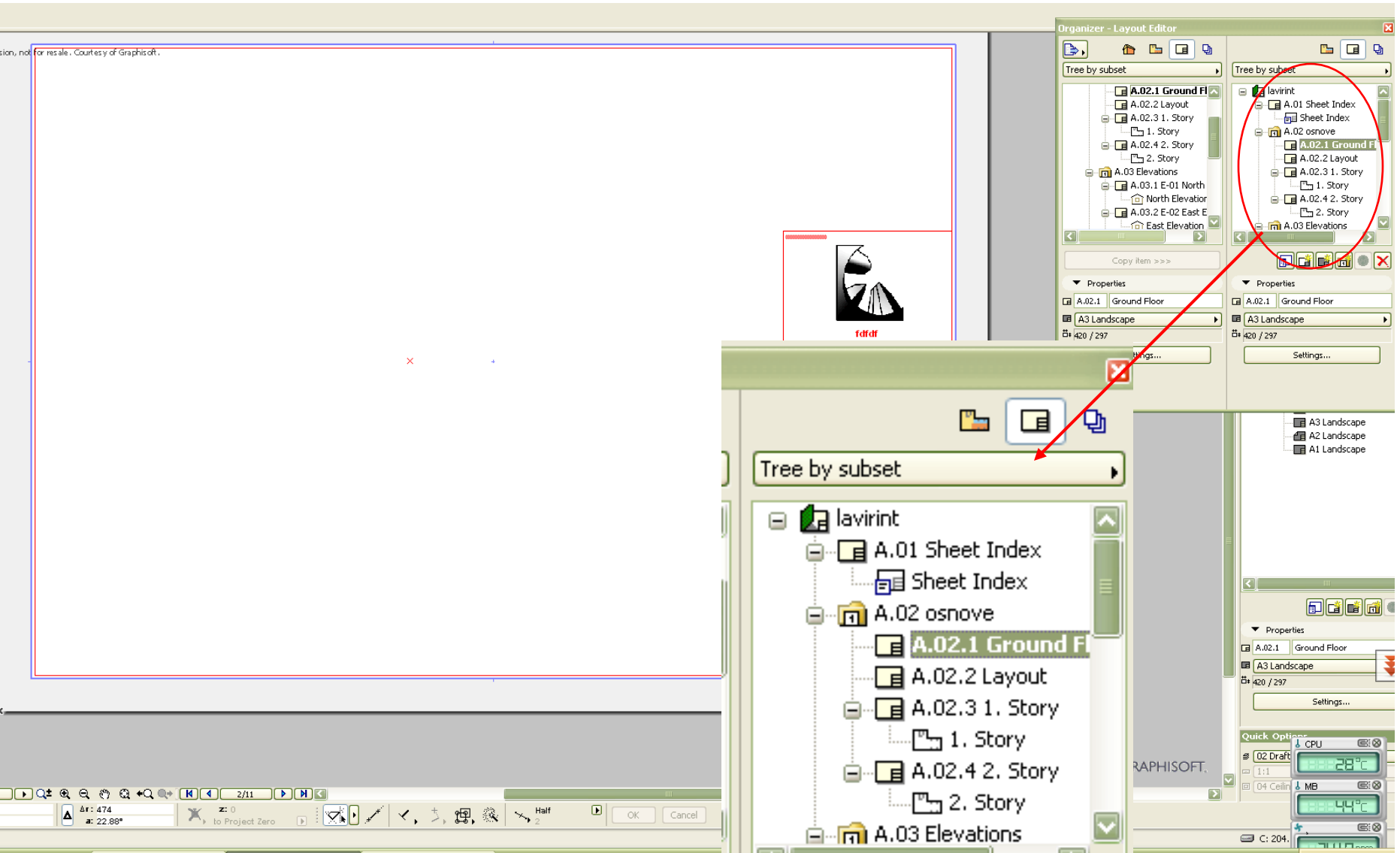
Text
Layer: Ar

Документација

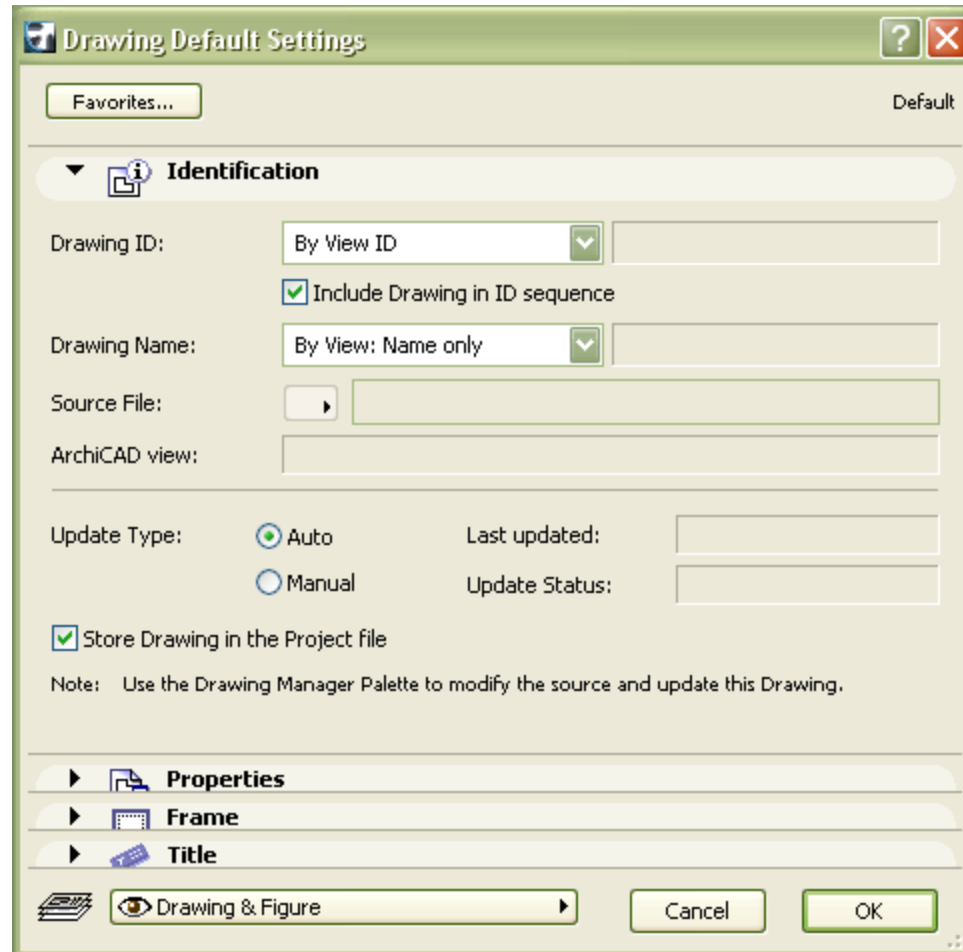
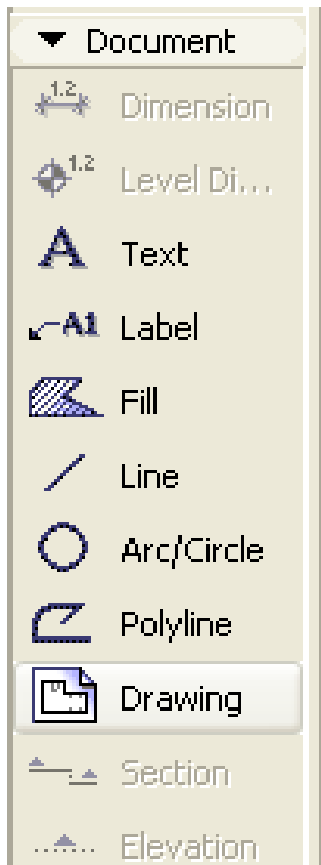
Мастери - шаблони

Company Title



Company name
Street
City
State/Country
Postal Code
Job Title
lavirint
Vedra Nebesa

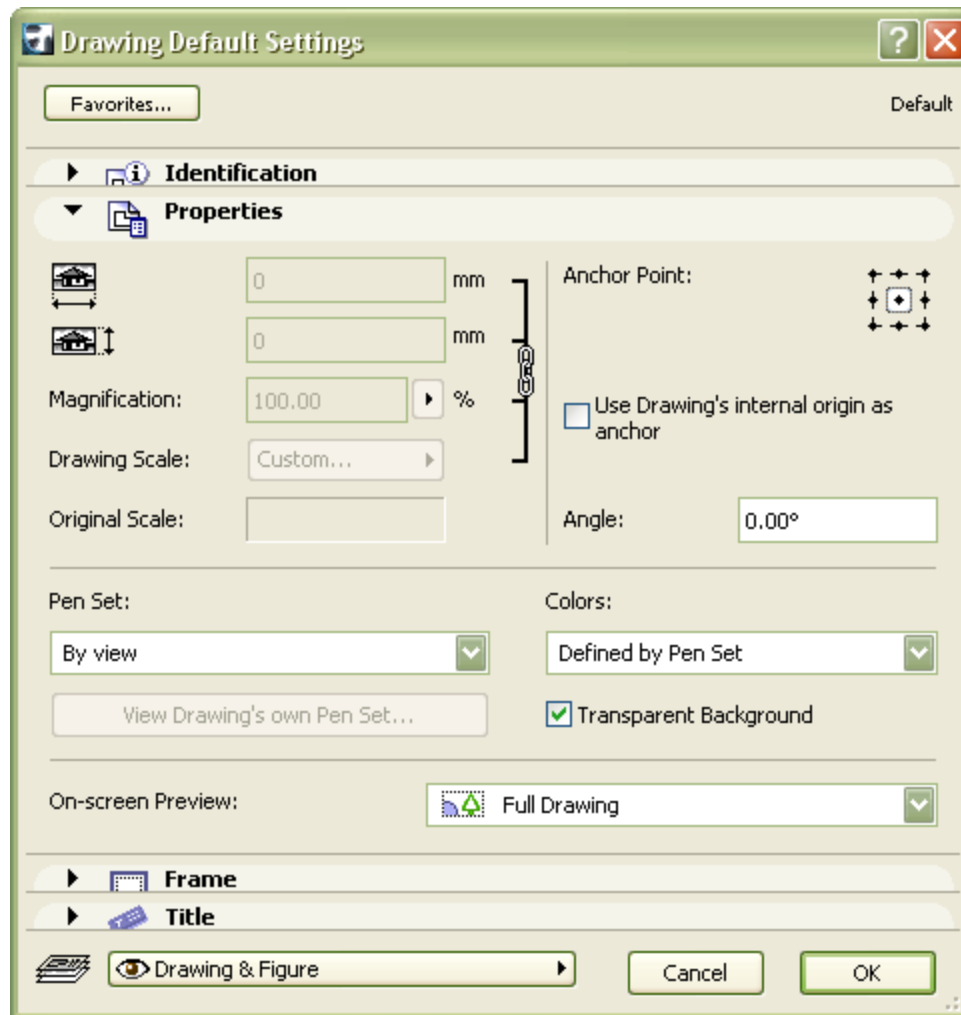
Документација



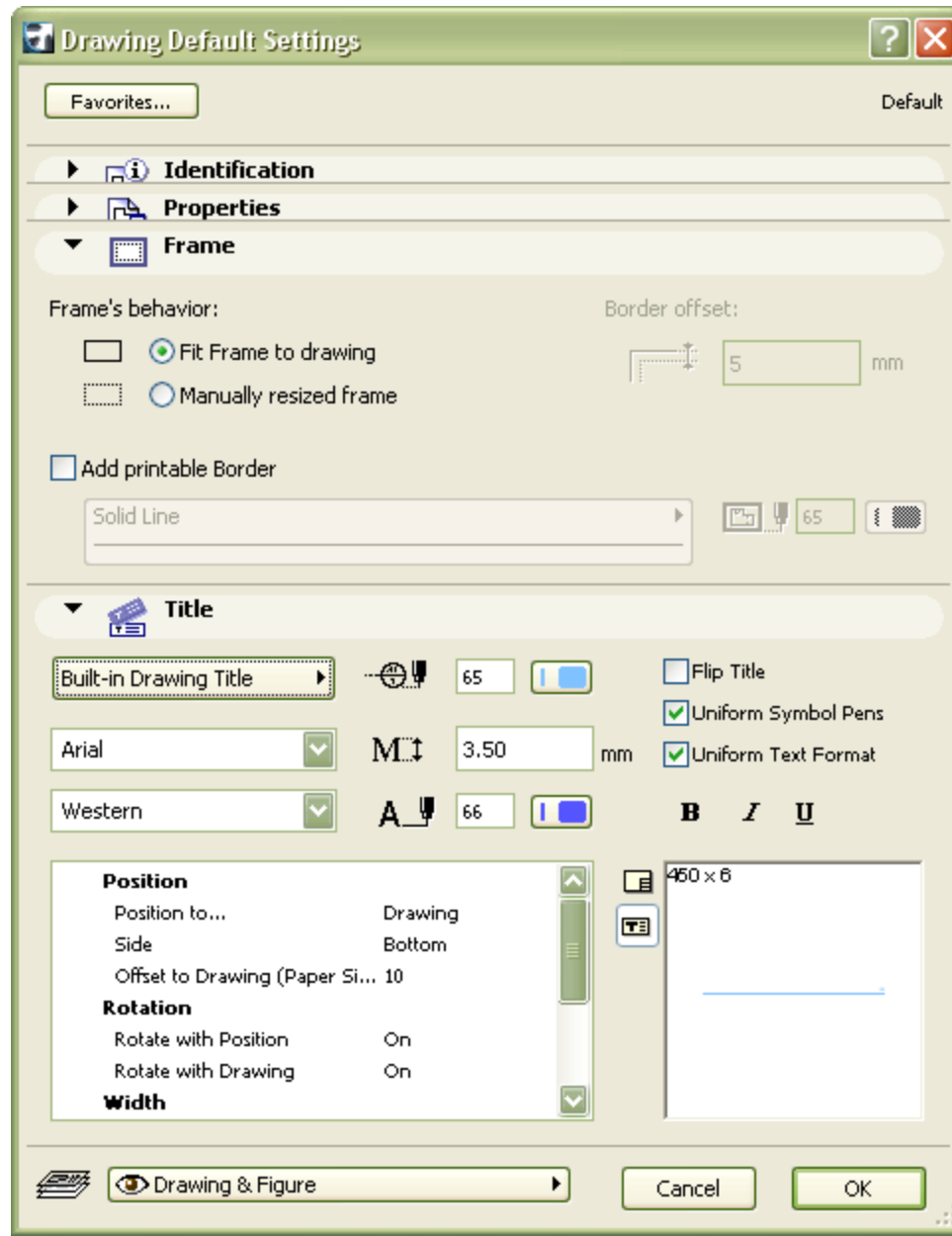
Документација



Документација



Документација



Документација

in, not for resale. Courtesy of Graphisoft.



fdfdf

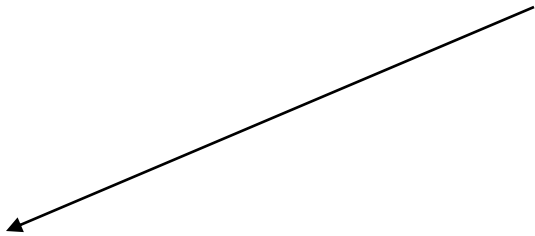
lavrint

Ground Floor

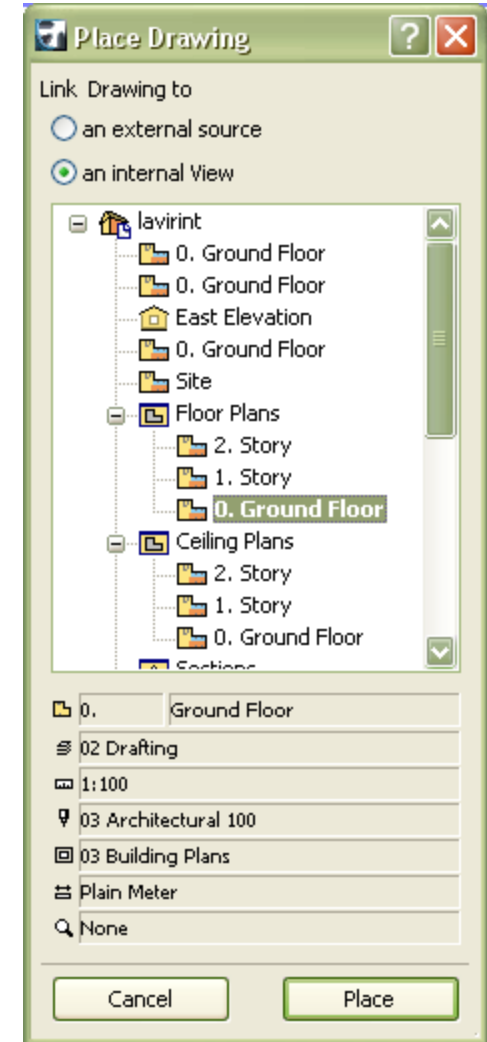
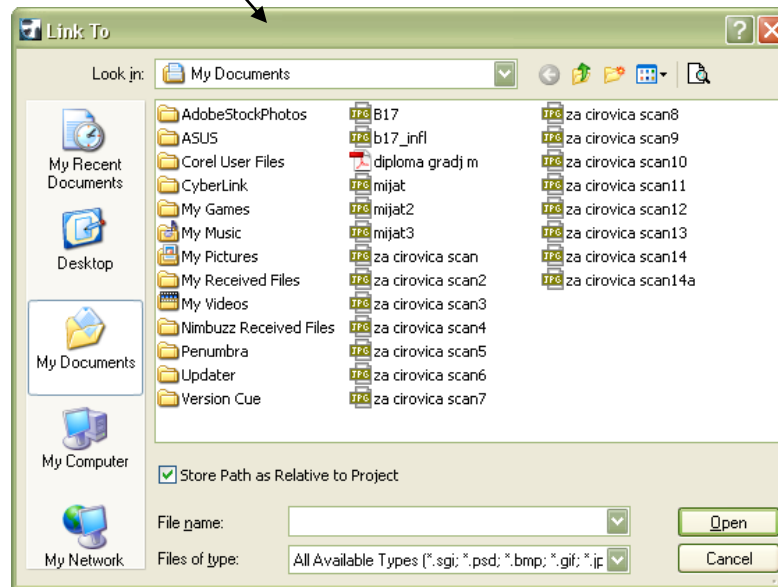
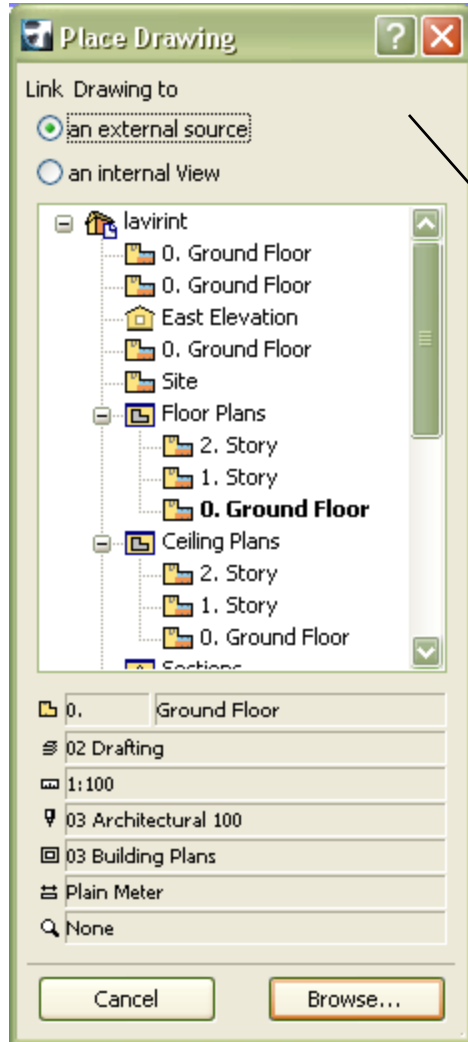
Done

1:200

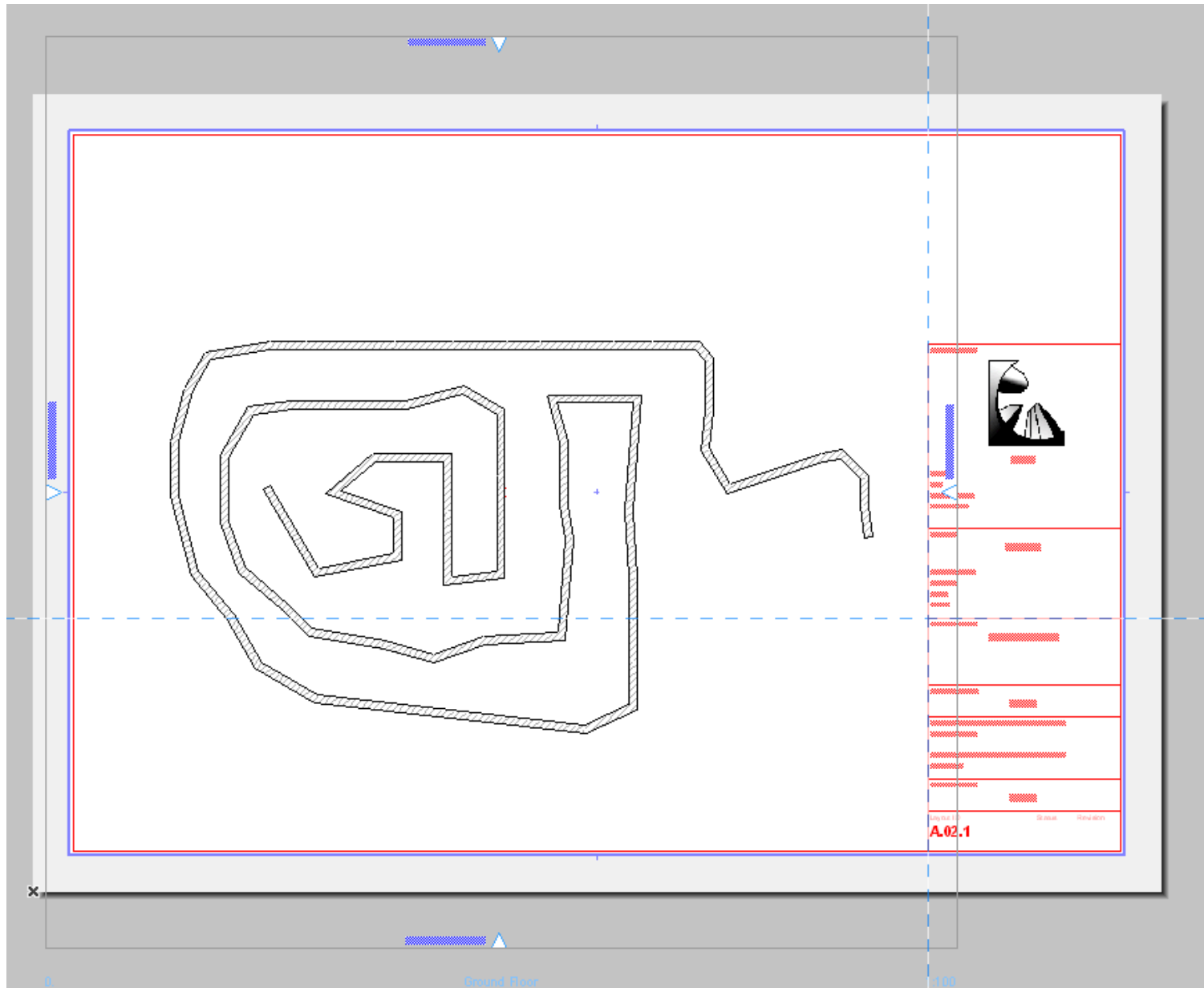
LayoutID Status Rev k ba
A.02.1



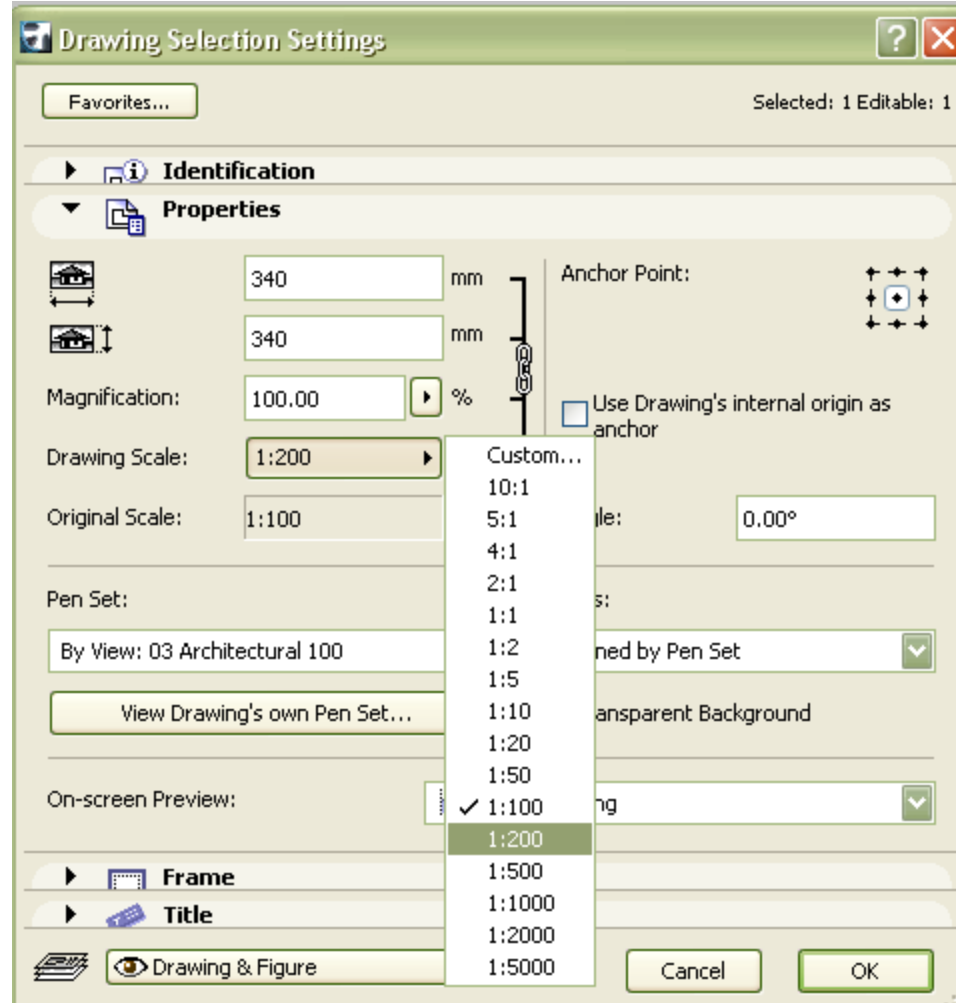
Документација



Документација

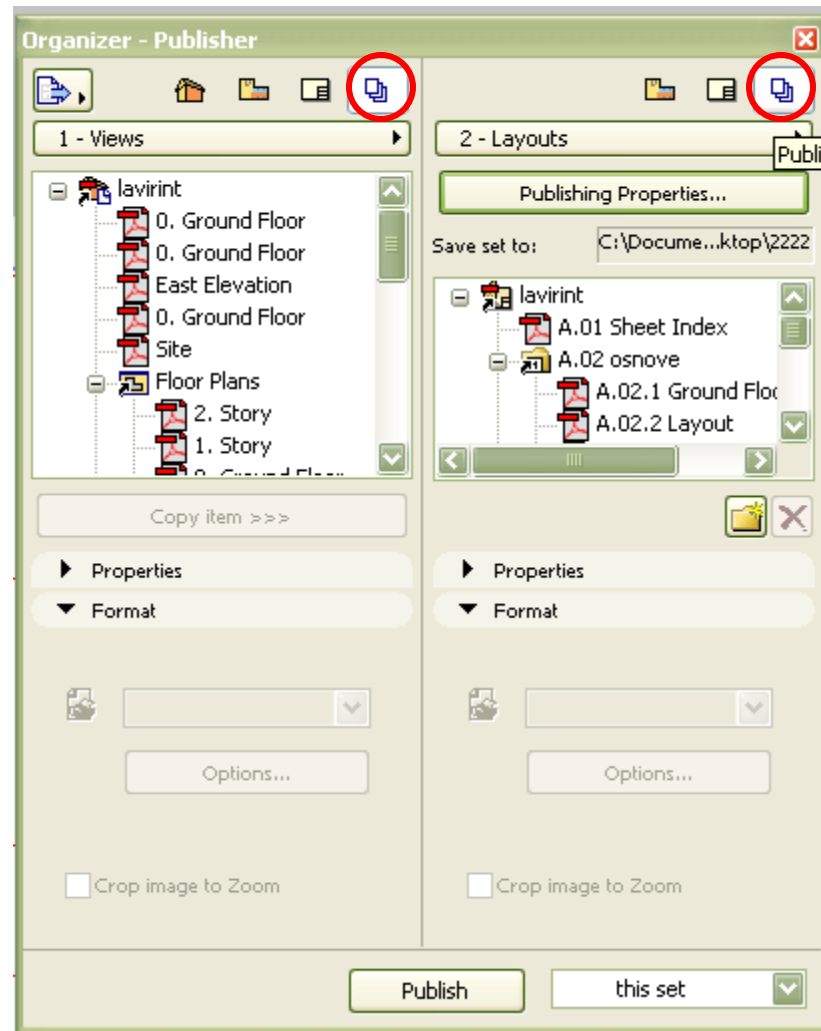


Документација

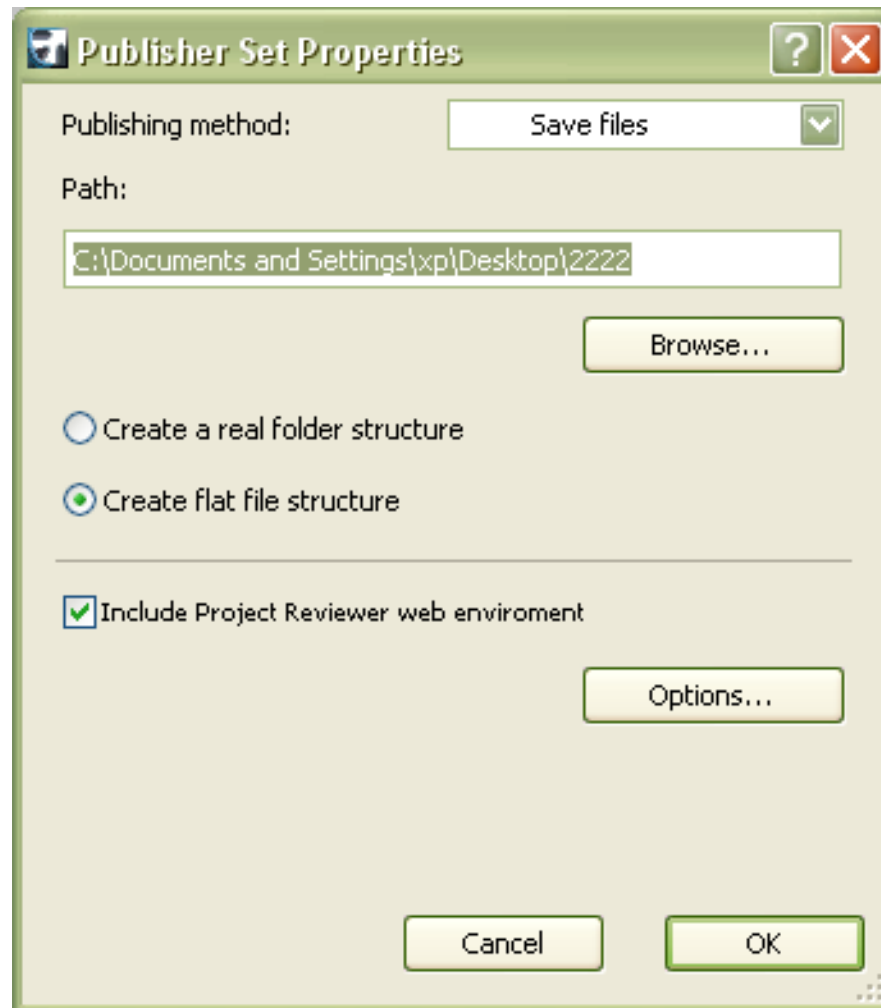


Документација

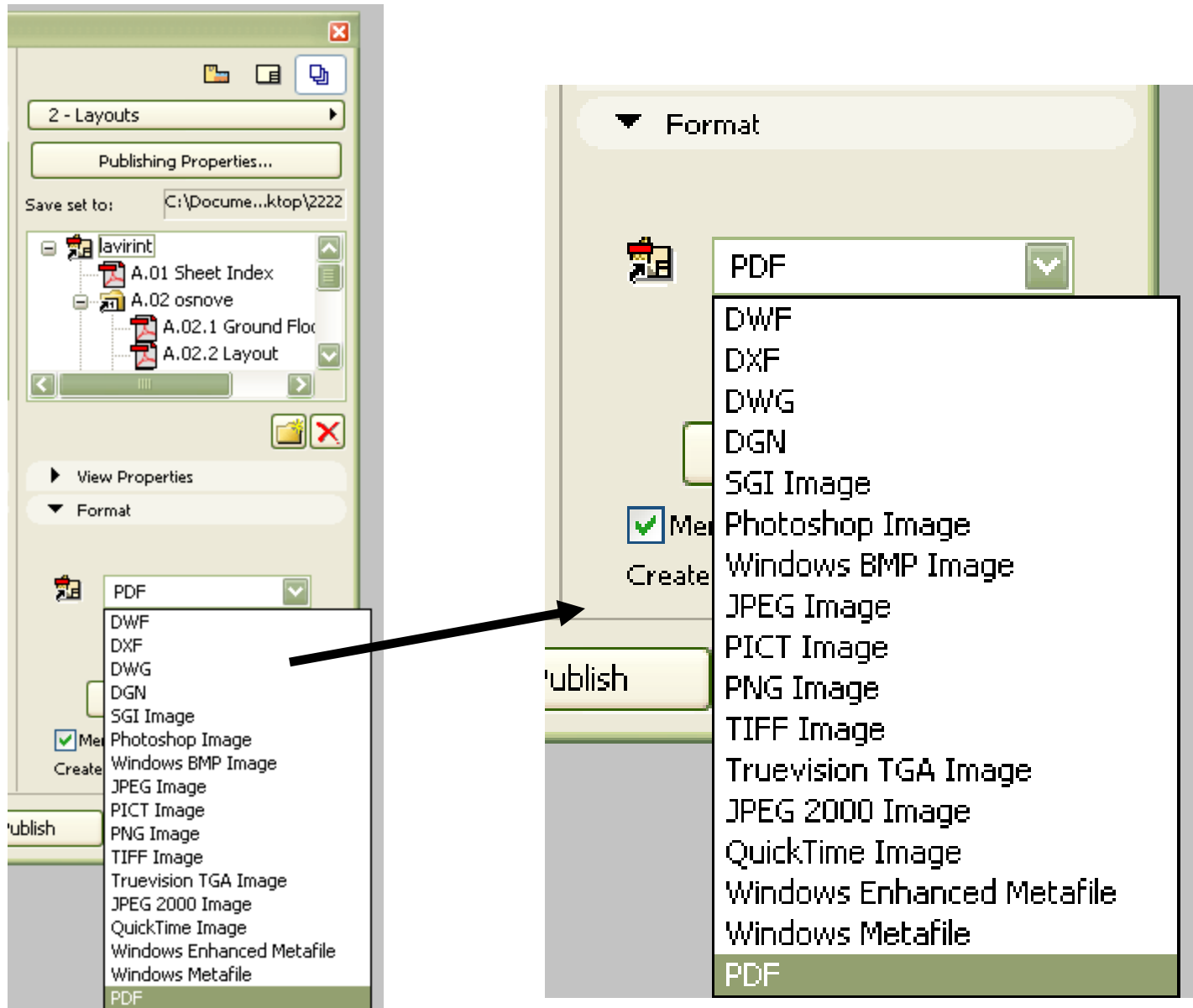
За штампу - Publish



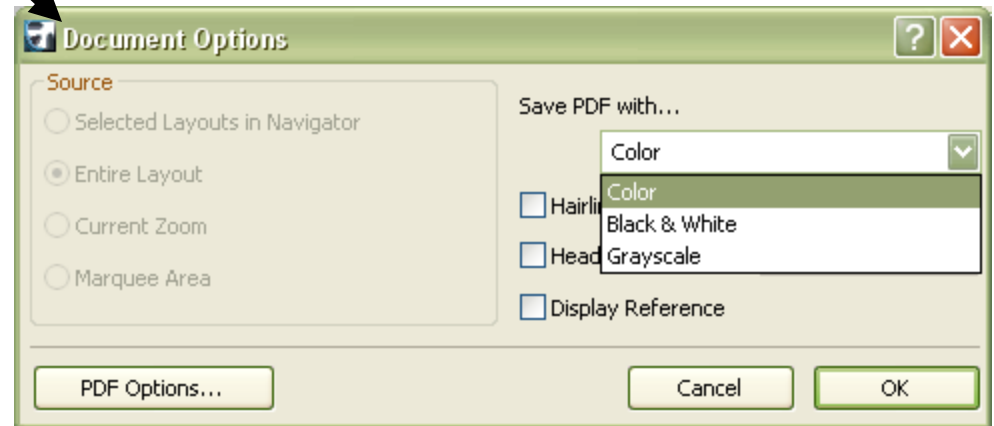
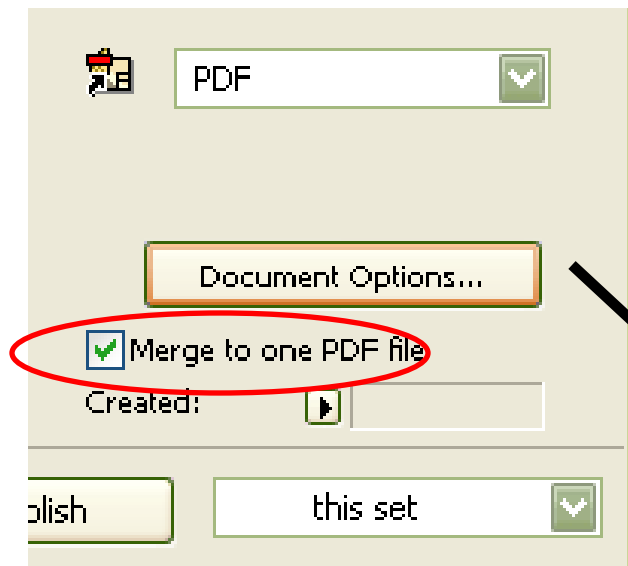
Документација



Документација




Документација



Документација

Publishing...

Name	Status	Size
✓ A.01 Sheet Index	Saved	99.74 KB
✓ A.02.1 Ground Floor	Saved	123.00 KB
✓ A.02.2 Layout	Saved	109.35 KB
✓ A.02.3 1. Story	Saved	111.54 KB
✓ A.02.4 2. Story	Saved	111.34 KB
✓ A.03.1 E-01 North Elevation	Saved	110.93 KB
✓ A.03.2 E-02 East Elevation	Saved	110.61 KB
✓ A.03.3 E-03 South Elevation	Saved	111.33 KB
✓ A.03.4 E-04 West Elevation	Saved	111.00 KB
✓ A.04 0. Ground Floor	Saved	112.40 KB
✓ A.05 East Elevation	Saved	110.30 KB
✓ Index of 2 - Layouts	Saved	2.53 KB
✓ Reviewer	Saved	

 Note: Double-click on the item in the list for details.

Close

Документација

The image shows a screenshot of a software application window, likely a PDF viewer or a document editor, displaying a document with a complex geometric pattern. The window title bar includes "Edit View Document Tools Window Help". The document content is a vertical strip with a repeating pattern of a complex, maze-like geometric shape. The pattern is composed of white lines on a dark background. The shape is a square with a smaller square inside, and a line connecting them, forming a continuous path. The pattern is repeated vertically. The window also shows a toolbar with navigation and search icons, and a status bar at the bottom with various system indicators and application icons.

System tray indicators (bottom right):

- CPU: 27°C
- MB: 44%
- 24.5 RPM

Taskbar (bottom):

- start
- Vodafone 527 Music - ...
- Untitled - Graphisoft ...
- Microsoft PowerPoint ...
- Inbox - Outlook Express
- 2222
- lavirink.PDF - Adobe ...
- EN
- 11:55 AM

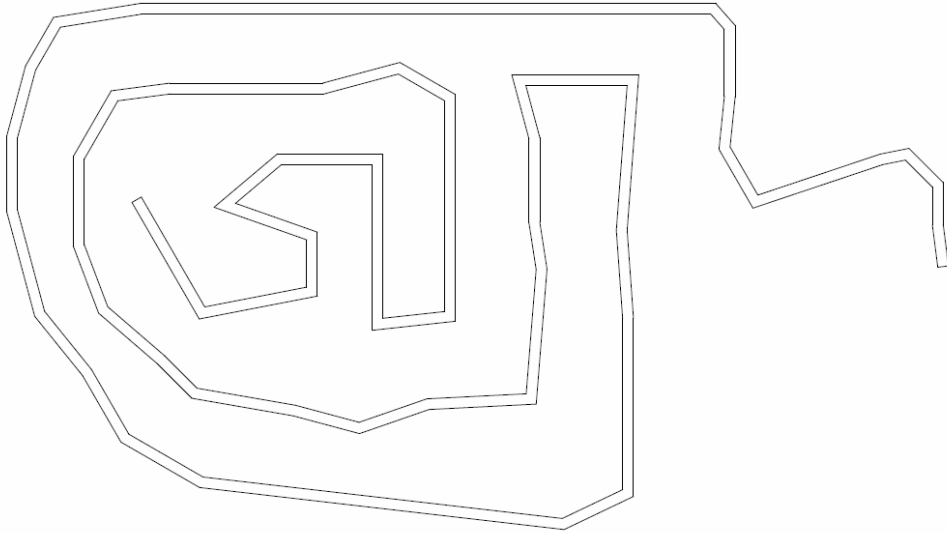
Документација

lavirint.PDF - Adobe Reader

File Edit View Document Tools Window Help

1 / 19 115% Find No current selection

ARCHICAD EDUCATIONAL VERSION
GRAPHISOFT.
Virtual Building Solutions



West Elevation East Elevation

CPU 26°C
MB 44°C
2463 RPM

start Vodafone 527 Music ... Untitled - Graphisoft ... Microsoft PowerPoint ... Inbox - Outlook Express 2222 lavirint.PDF - Adobe ... EN 10:56 AM